


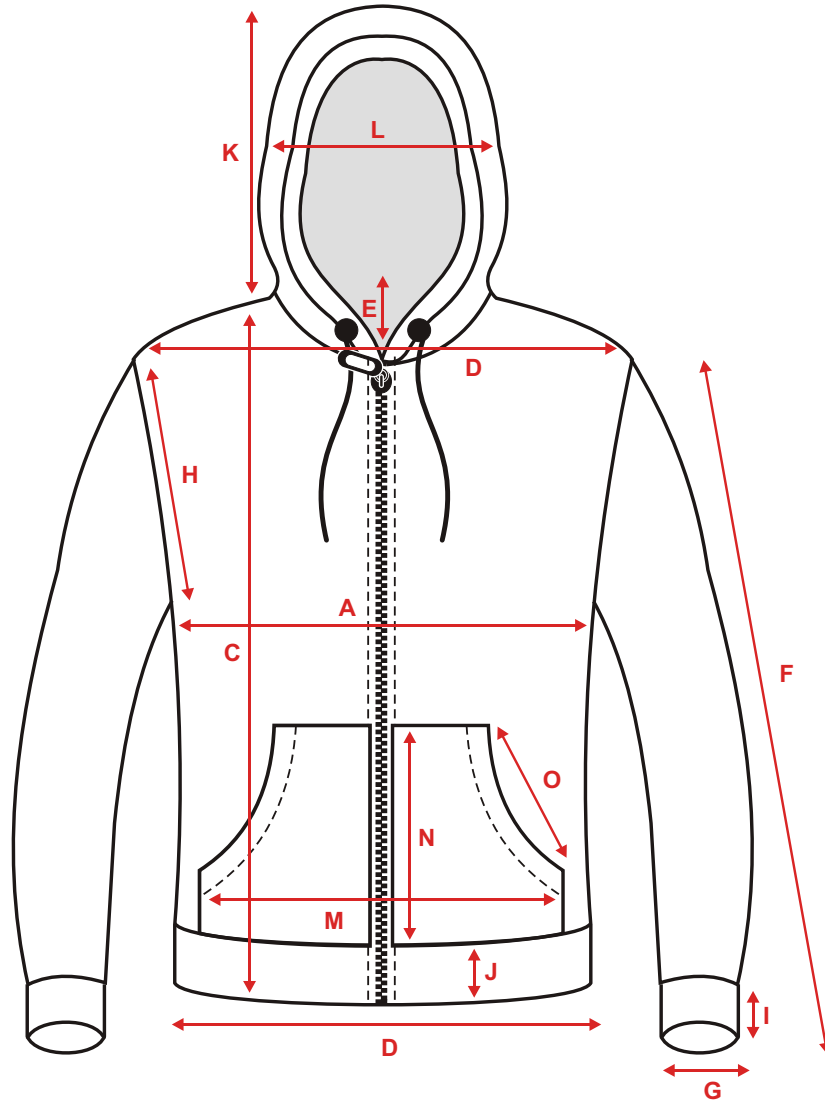




HOOD JACKET

Article No: 1260

Size	XS-5XL
Fabric	340gsm, 50% Baumwolle / Cotton 50% Polyester
Care Label	  
Carton Size	L:66 x W:40 x H:28 cm
Weight	GW: 10.00kg - NW: 9.00kg (Size L)
Carton Packing	12 Pcs.



**MS TEXTILHANDEL E.K.
HOODED-SWEAT-JACKET**

ARTICLE NO. 1260

DATE: March 2020

ALL MEASUREMENT IN CMS

MEASUREMENT POINTS		XS	S	M	L	XL	2XL	3XL	4XL	5XL
CHEST	A	51	54	57	60	63	66	69	72	75
BOTTOM RIB WIDTH	B	38	41	44	47	50	53	56	59	62
BODY LENGTH	C	60	63	66	69	72	75	78	81	84
SHOULDER	D	45	48	51	54	57	60	63	66	69
FRONT NECK DROP	E	8	9	9	10	10	11	11	12	12
SLEEVE LENGTH	F	59	60	61	62	63	64	65	66	67
SLEEVE OPENING	G	9	9	9	10	10	10	11	11	11
ARM HOLE	H	24	25	26	27	28	29	30	31	32
CUFF RIB WIDTH	I	6	6	6	6	6	6	6	6	6
BOTTOM RIB WIDTH	J	6	6	6	6	6	6	6	6	6
HOOD OPENING	K	34	34	36	36	38	38	40	40	42
HOOD WIDTH	L	28	28	28	28	28	28	28	28	28
POCKET SIZE WIDTH	M	36	36	38	38	40	40	40	40	40
POCKET SIZE LENGTH	N	23	23	24	24	25	25	26	26	27
POCKET OPENING	O	15	15	16	16	17	17	18	18	18