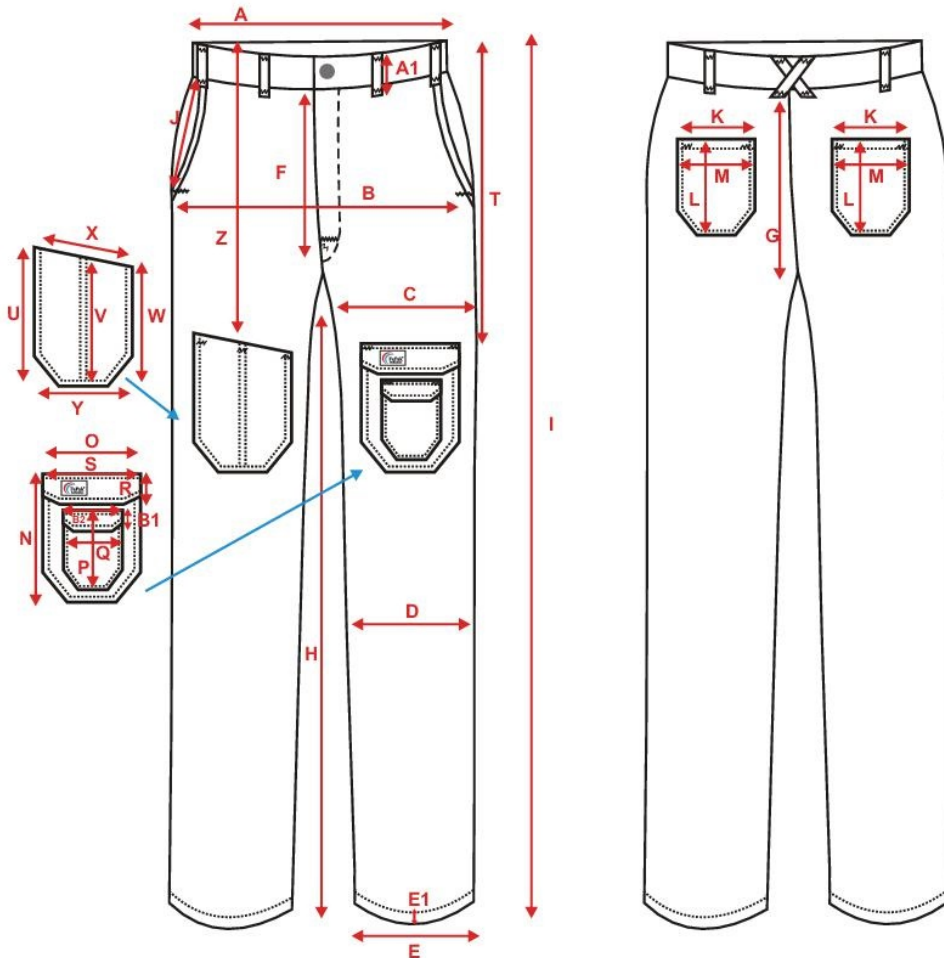




PANT (Black)

Article No: 1175

Size	XS-5XL
Fabric	240gsm, 65% Polyester 35% Baumwolle
Care Label	60°
Carton Size	L:53 x W:37 x H:24 cm
Weight	GW: 8.60kg - NW: 7.50kg (Size L)
Carton Packing	16 Pcs.



**MS TEXTILHANDEL E.K.
WORKWEAR TROUSERS**

ARTICLE NO.1175

DATE: June 2020

ALL MEASUREMENT IN CMS

MEASUREMENT POINTS		XS	S	M	L	XL	2XL	3XL
BODY LENGTH	I	107	110	113	117	120	120	120
IN SEAM	H	81	84	85	88	90	90	90
HIP (20CM)	B	51	53	55	58,5	63	68	70
THIGHI	C	31	32	33	35	37	40	41
KNEE	D	24	25	25,5	26,5	27,5	30	30
FRONT RISE	F	26	27	28	30	31	32	33
BACK RISE	G	40	41	42	44	45	46	47
LEG OPENING	E	22	22	22	23	23	23	23,5
LEG OPENING HEM	E1	2	2	2	2	2	2	2
WAIST	A	38	39	40	45	50	56	59
WAIST BAND HEIGHT	A1	4	4	4	4	4	4	4
FRONT POCKET OPENING	J	16	16	17	17	17	17	17
BACK POCKET LENGTH	L	18	18	18	18	18	18	18
BACK POCKET WIDTH	M	16	16	16	16	16	16	16
BACK POCKET OPENING	K	13,5	13,5	13,5	14	14	14	14
LENGTH SIDE LEG POCKET WITH FLAP	N	21	21	21	21	21	21	21
WIDTH SIDE LEG POCKET WITH FLAP	O	17	17	17	17	17	17	17
LENGTH SIDE LEG SMALL POCKET WITH FLAP	P	16	16	16	16	16	16	16
WIDTH SIDE LEG SMALL POCKET WITH FLAP	Q	8,5	8,5	8,5	8,5	8,5	8,5	8,5
LENGTH SIDE LEG POCKET,S FLAP	R	6	6	6	6	6	6	6
WIDTH SIDE LEG POCKET,S FLAP	S	17,5	17,5	17,5	17	17,5	17,5	17,5
WIDTH SIDE LEG POCKET,S FLAP	B1	6	6	6	6	6	6	6
LENGTH SIDE LEG POCKET,S FLAP	B2	6	6	6	6	6	6	6
DISTANCE BETWEEN SIDE LEG POCKET FROM TOP OF FLAP TO TOP OF WAIST BAND	T	33	33	32	32	34	34	32
LENGTH SIDE LEG POCKET WITH OUT FLAP FROM TOP EDGE TO BOTTOM	U	20	20	20	20	20	20	20
LENGTH SIDE LEG POCKET WITH OUT FLAP FROM MIDDLE EDGE TO BOTTOM	V	21	21	21	21	21	21	21
LENGTH SIDE LEG POCKET WITH OUT FLAP FROM LOWER EDGE TO BOTTOM	W	16	16	16	16	16	16	16
ACROSS WIDTH SIDE LEG POCKET WITH OUT FLAP FROM TOP	X	16	16	16	16	16	16	16
WIDTH SIDE LEG POCKET WITH OUT FLAP FROM BOTTOM	Y	12	12	12	12	12	12	12
DISTANCE BETWEEN SIDE LEG POCKET WITH OUT FLAP FROM MID EDGE OF POCKET TO TOP OF WAIST BAND	Z	34	34	32	32	35	35	34